



## ***Compact yet Heavy-duty Homogenizer that Offers Excellent Cost-effectiveness***

Bead beater ideal for lysing, extraction, or homogenization, utilizing an aggressive vertical mixing motion. Comes with 4 holders to hold vertically 12x microtubes (1.5 or 2.0 mL), 6x 15 or 5 mL tubes, 3x 50 or 20 mL tubes, and 12x microtubes (1.5 or 2.0 mL) horizontally. Beads are also available and sold separately for complete bead beating solution. The Bead Genie is compact compared to most bead beaters and homogenizers, yet heavy and durable.

### ***Unique Features:***

- **Small but Mighty**

Efficient DC motor and solid metal build enable aggressive 19mm vertical agitation without shifting, while the compact design fits easily into tight lab spaces like biosafety cabinets and cold rooms.

- **Broadly Compatible with Various Centrifuge Tubes and Beads**

Comes with 4 holders for microtubes, 5 mL, 15 mL, 20 mL, and 50 mL tubes, requiring no additional tools for swapping. Supports both glass and stainless steel beads for different sample types.

- **Digital Speed & Timer Control**

Adjustable speed and timer ensure reproducible results and fine control for varied protocols. Variable RUN/STOP time provides rapid pulsing for superior interval mixing.

# BEAD GENIE™

## Specifications

Model	Bead Genie
Control	Digital
Accessories Included	Tube Holder for 12x 1.5/2.0 mL, Tube Holder for 12x 1.5/2.0 mL (horizontal) , Tube Holder for 6x 15/5 mL, Tube Holder for 3x 50/20 mL
Capacity	12x 1.5/2.0 mL microtubes, 6x 15/5 mL tubes, 3x 50/20 mL tubes
Motion	Reciprocating, 19 mm
Speed Range	500 - 4800 strokes per minute
Timer	1 second - 99 minutes
Pulse - ON/OFF Time	1 second - 99 minutes
Safety Certification	CE
Power	100V-240V, 1.5A, 50/60Hz
Dimensions (L x W x H)	165 x 122 x 330 mm / 6.5 x 4.8 x 13 inch
Net Weight	6 kg / 13.3 lb
Working Environment	0°C - 38°C, 95%RH, non-condensing 32°F - 100°F, 95%RH, non-condensing

## Accessories



83041297 (REF #: SI-BSG07)

Genie Bead Sample Pack

5 types of beads included



83041298 (REF #: SI-BS05)

Stainless Steel Beads, 5mm

Stainless Steel 316 Beads  
may be used for tough animal tissue  
and resilient samples



83041299 (REF #: SI-BS03)

Stainless Steel Beads, 3.2mm

Stainless Steel 316 Beads  
may be used for tough animal tissue  
and resilient samples



83041300 (REF #: SI-BS02)

Stainless Steel Beads, 2.4mm

Stainless Steel 316 Beads  
may be used for tough animal tissue  
and resilient samples



83041301 (REF #: SI-BG05)

Disruptor Beads, 0.5mm,  
375g (8 fl. oz.)

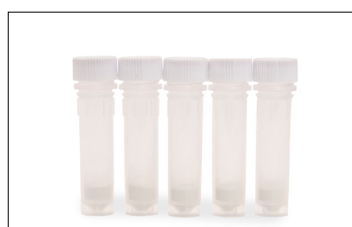
Soda Lime Glass Beads  
may be used for yeast, fungi



83041302 (REF #: SI-BG01)

Disruptor Beads, 0.1mm,  
375g (8fl. oz.)

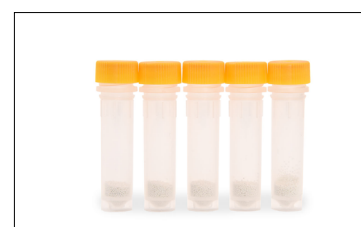
Soda Lime Glass Beads  
may be used for bacteria, spores



30391402

Lysis Tube 100x2mL  
100µm ZrO2 Beads

Zirconium Beads  
may be used for bacteria, spores



30391404

Lysis Tube 100x2mL  
400µm ZrO2 Beads

Zirconium Beads  
may be used for yeast, algae, spores

# BEAD GENIE™



**30391405**

**Lysis Tube 100x2mL  
800µm ZrO2 Beads**

Zirconium Beads  
may be used for fungal mycelium, cells,  
spores, eukaryotic algae



**30391406**

**Lysis Tube 100x2mL  
1.4mm ZrO2 Beads**

Zirconium Beads  
may be used for soft tissues, cultured  
cells and blood, thin sections of fungal  
thallus, soft plant material



**30391408**

**Lysis Tube 100x2mL  
3mm ZrO2 Beads**

Zirconium Beads  
may be used for plant, stems,  
roots, leaves



**30391409**

**Lysis Tube 100x2mL  
3mm SS. Beads**

Stainless Steel 440C Beads  
may be used for tough animal tissue  
and resilient samples



**30391410**

**Lysis Tube 100x2mL  
0.1/0.8/3mm ZrO2 Bead**

Zirconium Beads  
may be used for feces, soil,  
sediments, biofilms



**30391433**

**Lysis Tube 14x2mL Sample Kit**

7 types of beads included

## Install Microtubes Horizontally



1. Pick horizontal tube holder



2. Put tube holder onto shaft



3. Place tubes on holder, cap  
end inward



4. Put lid on and tighten  
thumbscrew



5. Check if tubes are firmly  
clamped



6. Go bead beating

# BEAD GENIE™

## Install Tubes Vertically



1. Pick vertical tube holder



2. Put tube holder onto shaft



3. Hang tubes by cap's edge



4. Put lid on and tighten thumbscrew



5. Check if tubes are firmly clamped



6. Go bead beating

## Other Features and Equipment

Coated aluminum housing and bottom plate, rubber feet, protective sleeve, backlit Liquid Crystal Display (LCD), tool-free interchangeable tube holders, countdown timer, solid metal casting weighing 13 pounds (6 kilos) ensures stable performance without movement.

## Compliance

- **Product Safety:** IEC/EN 61010-1; IEC/EN 61010-2-051
- **Electromagnetic Compatibility:** IEC/EN 61326-1 Class A, Industrial environments; Canada ICES-003 Class A; FCC Part 15 Class A
- **Compliance Marks:** CE; RCM; WEEE

**MULTI-FUNCTION INCUBATOR GENIE™**

**Replacers, Heat, Rotate, Rock, Stir and Shaker All in One Compact Benchtop Equipment**

Controlled by a single system, the incubator features a control for incubation, rotation and temperature. The digital display shows temperature, time, speed, rotation, and other parameters. The incubator is designed for use in a laboratory setting.

**Designed for Precision, Built for Versatility, Sized for Any Lab.**

Controlled by a single system, the incubator features a control for incubation, rotation and temperature. The digital display shows temperature, time, speed, rotation, and other parameters. The incubator is designed for use in a laboratory setting.

**2 Block Dry Block Heaters**

**Versatile Block Heaters Designed for Everyday Use with Accessories for Every Application**

Variable Dry Block Heaters are ideal for applications that require temperature stability. All units have 2 precision ground heating blocks with over 100 holes. Blocks are made to your size.

Controlled by a single system, the incubator features a control for incubation, rotation and temperature. The digital display shows temperature, time, speed, rotation, and other parameters. The incubator is designed for use in a laboratory setting.



80777174\_A 20260211 © Copyright OHAUS Corporation

**OHAUS CORPORATION**  
 Tel: 800.672.7722  
 973.377.9000  
 Fax: 973.944.7177  
[www.ohaus.com](http://www.ohaus.com)

The management system governing the manufacture of this product is ISO 9001:2015 certified.

