

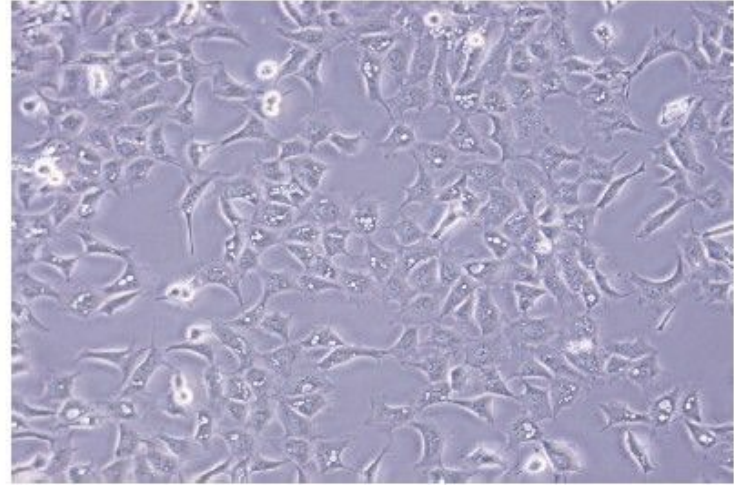
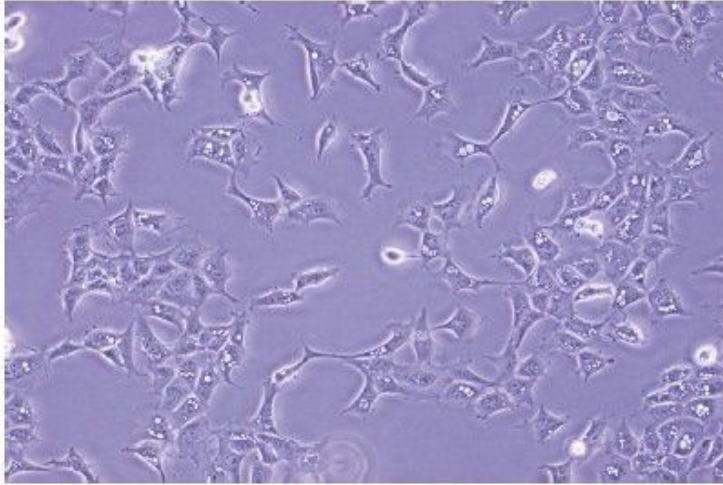
Bench Test Report

Cell Culture Flask

Cell Culture

- 293A — Human Embryonic Kidney Epithelial
- L-929 — Mouse Fibroblast
- HeLa — Human Epithelial
- HEK-293 — Human Epithelial
- MDA-MB-231 — Human Epithelial
- MCF-7 — Human Epithelial
- COS-7 — Monkey Fibroblast

GenClone Cell Culture Flask — 293A



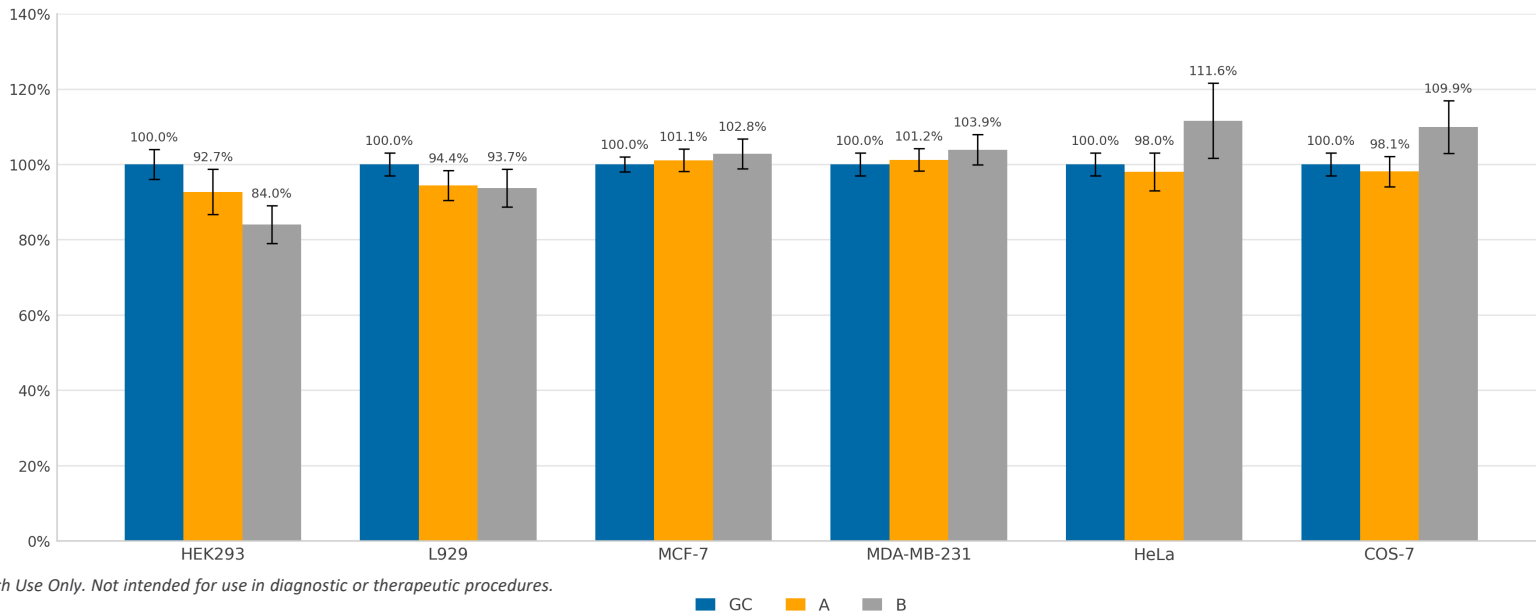
- Human kidney epithelial (293A) cells cultured on GenClone Cell Culture Flasks for 72 hours (seeding density: 6×10^5 cells/flask).
- Cells were maintained at 37°C under humidified conditions in 10 mL of DMEM supplemented with 10% FBS and 1% antibiotics.
- Cells tested negative for microbial contamination.

GenClone Cell Culture Flask — Cell Attachment Comparison

Experimental Conditions

- Cell lines: L-929 (mouse fibroblast), HeLa (human epithelial), HEK-293 (human epithelial), MDA-MB-231 (human epithelial), MCF-7 (human epithelial), COS-7 (monkey fibroblast)
- Cell density: 7×10^3 cells/cm²
- Media: 10% FBS in RPMI 1640 or MEM
- Culture conditions: 37°C, 5% CO₂

Figure 1. Comparison of Cell Attachment Properties on T75 Cell Culture Flasks



For Research Use Only. Not intended for use in diagnostic or therapeutic procedures.