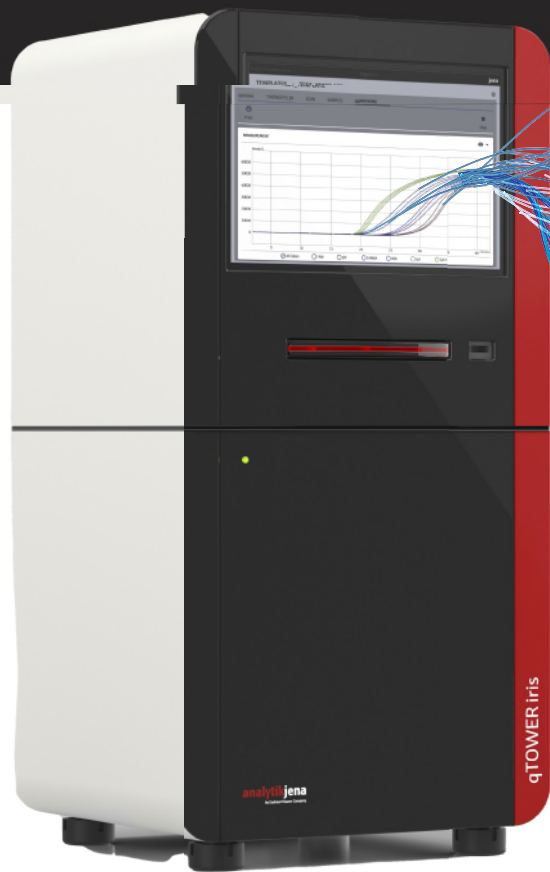


qTOWERiris - Real Time qPCR Instrument Follow Your Vision



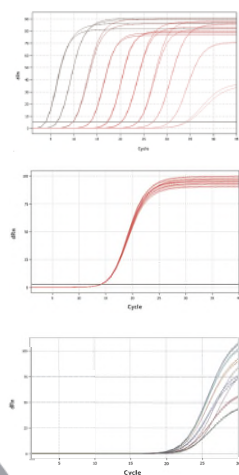
qTOWERiris builds on nearly 40 years of experience in PCR and qPCR technology and provides users with freedom to choose their color modules, consumables, reagents, and kits.


Exclusively from Genesee Scientific


Apex™
BioResearch Products


An Endress+Hauser Company

qTOWERiris Series - The New Kind of Real-Time qPCR Thermal Cyclers.



Wide linear range with accurate quantification across 10 orders of magnitude

Unparalleled temperature homogeneity of ± 0.1 °C across the entire block

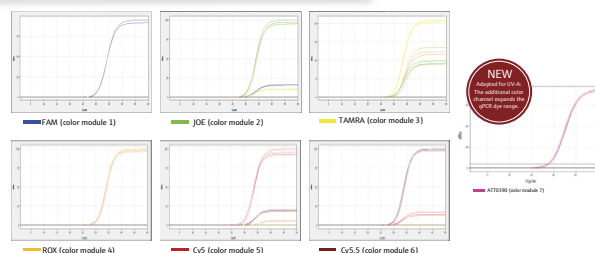
Reliable results with sample volume 2.5 μ L to 100 μ L.



7 LED multi-color light source and patented fiber-optic shuttle system directly illuminates each individual well without edge effect

Fast scan time: 6 seconds independent of the number of dyes.

Choose from 7 individually available and factory calibrated color module with spectral coverage from UV-A to NIR.



qTOWERiris empowers you to feel free from the expensive maintenance contracts with 10-year warranty on optic system and up to 3-year warranty on the device system.

High reproducibility and sensitivity with Apex qPCR GREEN Master Mix with different concentrations of ROX



Apex 2X GREEN Master Mixes are single-tube 2x reagents including all components necessary to perform DNA-binding dye based real-time DNA amplification. Just add your primers and DNA.

Apex Bioresearch Products qPCR Green Master Mixes:

qPCR 2X GREEN Master Mix Without ROX™:

42-116PG

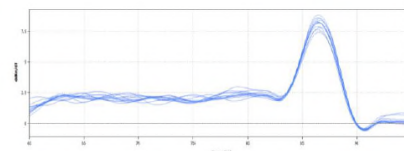
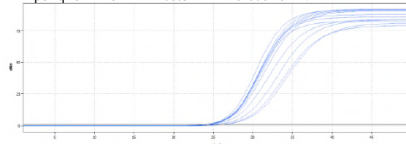
qPCR 2X GREEN Master Mix Low ROX™:

42-119PG

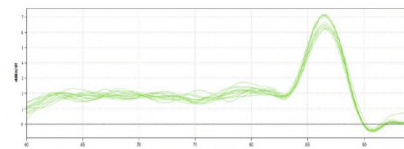
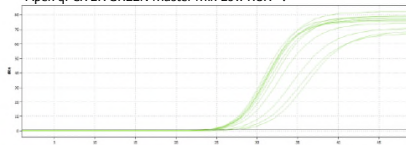
qPCR 2X GREEN Master Mix High ROX™:

42-120PG

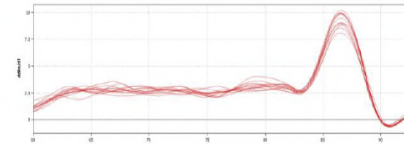
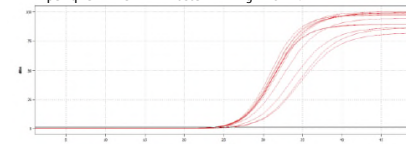
Apex qPCR 2X GREEN Master Mix Without ROX™:



Apex qPCR 2X GREEN Master Mix Low ROX™:



Apex qPCR 2X GREEN Master Mix High ROX™:



qPCR amplification curves of gradient qPCR experiment over 8 different annealing temperatures of human DNA with Apex qPCR 2x Green Master Mixes.

qPCR melting curves of gradient qPCR experiment over 8 different annealing temperatures of human DNA with Apex qPCR 2x Green Master Mixes.

Olympus PCR plates are synonymous with quality, consistency and reliability.

Ultra-thin wall for optimum heat transfer and higher yields. Certified free of detectable RNase, DNase and human DNA. Made of 100% virgin polypropylene.



Olympus Plastics PCR Plates:

Olympus 96-Well PCR Plate, Full-Skirted Ultra Thin Wall, White, 10 Plates/Unit:

24-302W

Olympus 384-Well PCR Plate, White A24 Cut Corner, 10 Plates/Unit:

24-305W

Olympus 0.1ml 96-Well PCR Plate, Semi-Skirted Low Profile, White, 10 Plates/Unit:

27-409

Olympus 96-Well PCR Plate, Semi-Skirted Straight-Sided, White, 10 Plates/Unit:

27-411