



Inheriting the Classics and Striving for New Heights of Excellence

The legendary “Vortex-Genie” you trust is now part of OHAUS! As a global leader in instruments and equipment, we assure you that the performance and quality of the Vortex-Genie will remain exceptional, and we will continuously strive to provide you with an outstanding experience. Additionally, we will empower this legend with the OHAUS advantages of Trust, Agility, Ingenuity, and Commitment, offering you greater value and superior products.

Unique Features:

- **The Comprehensive Collection to Fit Every Need**

Vortex-Genie 2 offers variable speeds for precise mixing; the 2T adds a programmable timer for auto stops; the Digital ensures accuracy and repeatability; the Pulse provides adjustable RUN/STOP time.

- **GENIE™ - The Brand You Know and Trust for Your Laboratory**

Proven to operate for decades, the Vortex-Genie’s solid build and robust design ensures reliable performance across diverse application environments.

- **Mixing from Micro to Bulk**

It features 30+ accessories and quick-change capability, enabling mixing from small tubes to large vessels.

VORTEX-GENIE™

Specifications

Model	Vortex-Genie 2	Vortex-Genie 2T	Digital Vortex-Genie 2	ABI Digital Vortex-Genie 2	Vortex-Genie Pulse
Control	Analog		Digital		
Display	-		Red LED		
Working Mode	Touch, Hands Free				Hands Free, Pulse
Accessories Included	3-inch Platform, Pop-off Cup			Applied Biosystem's 96/384-Well Microplate Adaptor	3-inch Platform, Pop-off Cup
Speed Range	600 rpm - 3200 rpm 600 rpm - 2700 rpm (for 50Hz models)		500 rpm - 3000 rpm 500 rpm - 2850 rpm (for 50Hz models)		
Orbit	4 mm		3.5 mm		3 mm
Timer	-	1-60 seconds; 1-60 minutes	1-99 seconds; 1-99 minutes		1-99 minutes
Pulse - ON/OFF Time	-				0.1 second - 99 minutes
Safety Certification	CE; ETL				
Power	120V, 0.65A, 60Hz 230V, 0.5A, 50Hz 100V, 1.0A, 50Hz		120V, 0.65A, 60Hz 230V, 0.5A, 50Hz 100V, 1.0A, 50/60Hz		
Dimensions (L x W x H)	165 x 122 x 165 mm / 6.5 x 4.8 x 6.5 inch				
Net Weight	4 kg / 8.8 lb				
Working Environment	0°C - 38°C, 95%RH, non-condensing / 32°F - 100°F, 95%RH, non-condensing				

Accessories



83041239 (REF #: SI-V525)

Vertical 50ml, 15ml,
Microtube Holder



83041240 (REF #: SI-V524)

Vertical Microtube Holder



83041241 (REF #: SI-V512)

Vertical 15ml Tube Holder
(12 clip)



83041242 (REF #: SI-V506)

Vertical 50ml Tube Holder



83041243 (REF #: SI-V209)

Vertical High Speed
Microtube Holder



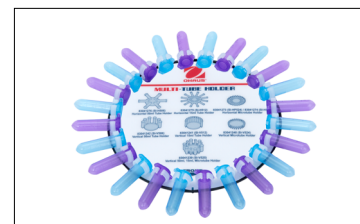
83041244 (REF #: SI-V206)

Vertical High Speed 15ml Tube
Holder



83041245 (REF #: SI-V203)

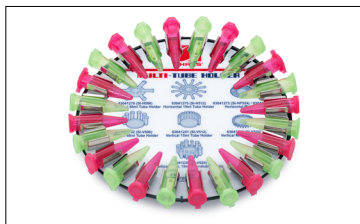
Vertical High Speed 50ml Tube
Holder



83041273 (REF #: SI-HP524)

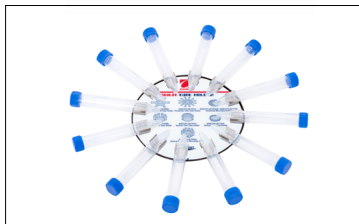
Horizontal Plastic Clip
Microtube Holder

VORTEX-GENIE™



83041274 (REF #: SI-H524)

Horizontal Microtube Holder



83041275 (REF #: SI-H512)

Horizontal 15ml Tube Holder



83041276 (REF #: SI-H506)

Horizontal 50ml Tube Holder



83041389 (REF #: SI-0570)

Small Ampule/Tube Attachment



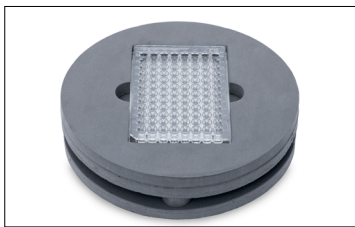
83041390 (REF #: SI-0564)

TurboMix Attachment



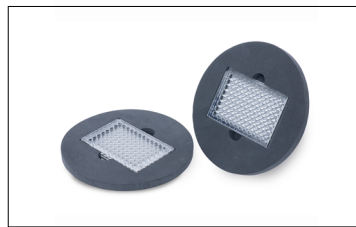
83041391 (REF #: SI-0511)

Large Ampule/Tube Attachment



83041392 (REF #: SI-0510)

Two-Tier Microplate Foam Insert



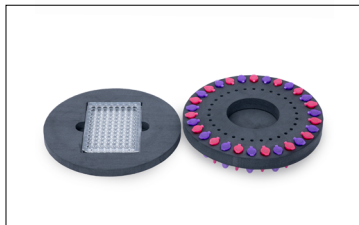
83041417 (REF #: 504-0235-00)

Inserts for 96 Micro Well Plate (2)



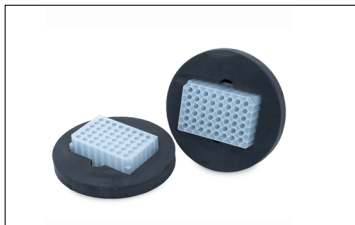
83041418 (REF #: 504-0234-00)

Inserts for 60 Micro Tubes (2)



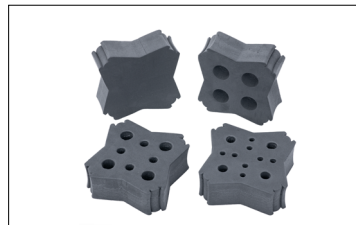
83041419 (REF #: 504-0233-00)

H301 - Multiple Sample Head Starter Set



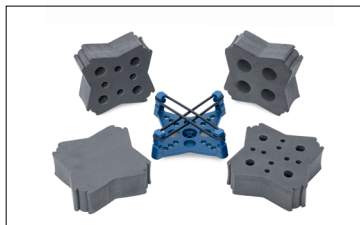
83041420 (REF #: 504-0232-00)

Deepwell Microplate Foam Insert (2)



83041421 (REF #: 503-0283-00)

Assorted Tube Inserts for H302 (4)



83041422 (REF #: 503-0282-00)

H302 - Large Sample Set



83041423 (REF #: 0K-0500-902)

3" Platform Head With Rubber Cover Kit



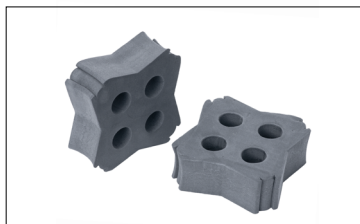
83041428 (REF #: 146-6005-00)

6" Platform Head



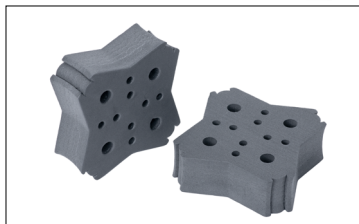
83041429 (REF #: 503-0279-00)

14-29mm Tube Inserts (2)



83041430 (REF #: 503-0280-00)

29-37mm Tube Inserts (2)



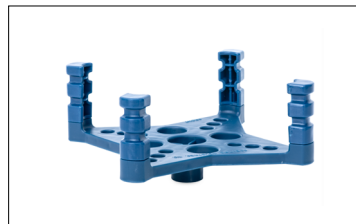
83041431 (REF #: 503-0278-00)

9-16mm Tube Inserts (2)



83041432 (REF #: 503-0277-00)

Blank Inserts (2)



83041433 (REF #: 504-0039-00)

Recessed Platform Head, Complete

VORTEX-GENIE™



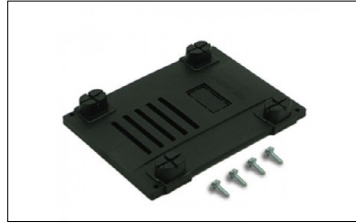
83041434 (REF #: 568-0001-00)

Elastic Bands (2)



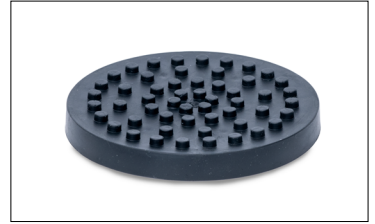
83041438 (REF #: 146-3011-00)

Pop-Off Cup Head



83041441 (REF #: 0K-0236-408)

Molded Bottom Closure And Screws Kit, Re



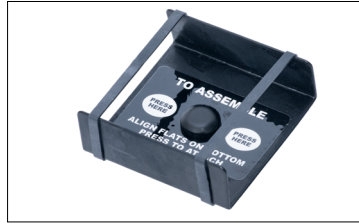
83041442 (REF #: 580-2013-00)

Rubber Cover For 3" Head



83041467 (REF #: SI-0565)

Universal Microtube Holder



83041468 (REF #: SI-0513)

MicroPlate Adaptor Kit for Applied Bio S



83041475 (REF #: 0K-0500-901)

3 inch Platform Head, without rubber cov

Other Features and Equipment

Zinc-casted housing with "no-walking feet" design, pop-off cup, 3-inch platform with rubber cover, adjustment knob(s) with dial markings for analog models, or LED displays for digital models, hands-free or touch on control, countdown timer, cold room and incubator compatible. Specially configured model for the applied biosystems protocol, featuring an attachment for holding half-skirted and unskirted PCR plates.

Compliance

- **Product Safety:** IEC/EN 61010-1; IEC/EN 61010-2-051; CAN/CSA C22.2 61010-1-12; CAN/CSA C22.2 61010-2-051; UL 61010-1; UL 61010-2-051
- **Electromagnetic Compatibility:** IEC/EN 61326-1 Class A, Industrial environments; Canada ICES-003 Class A; FCC Part 15 Class A
- **Compliance Marks:** ETL; CE; RCM; WEEE



80777182_A 20260205 © Copyright OHAUS Corporation

OHAUS CORPORATION

Tel: 800.672.7722

973.377.9000

Fax: 973.944.7177

www.ohaus.com

The management system governing the manufacture of this product is ISO 9001:2015 certified.

